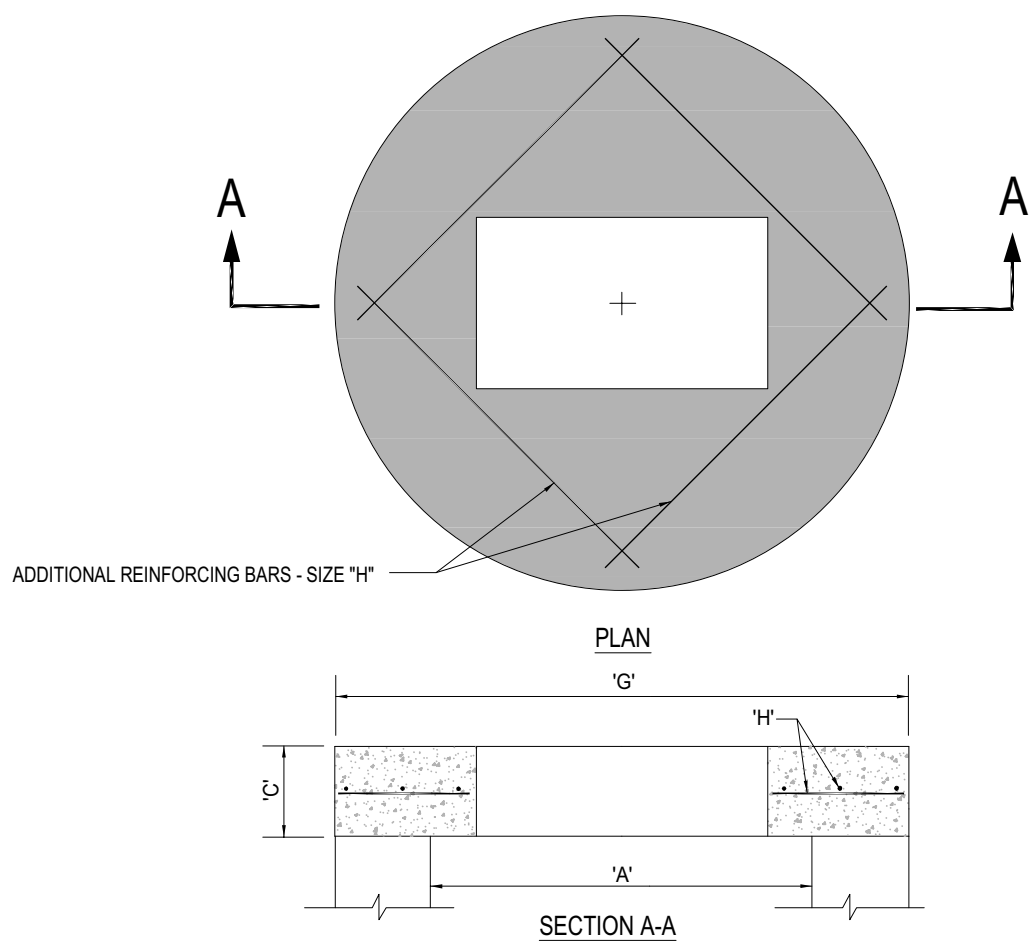
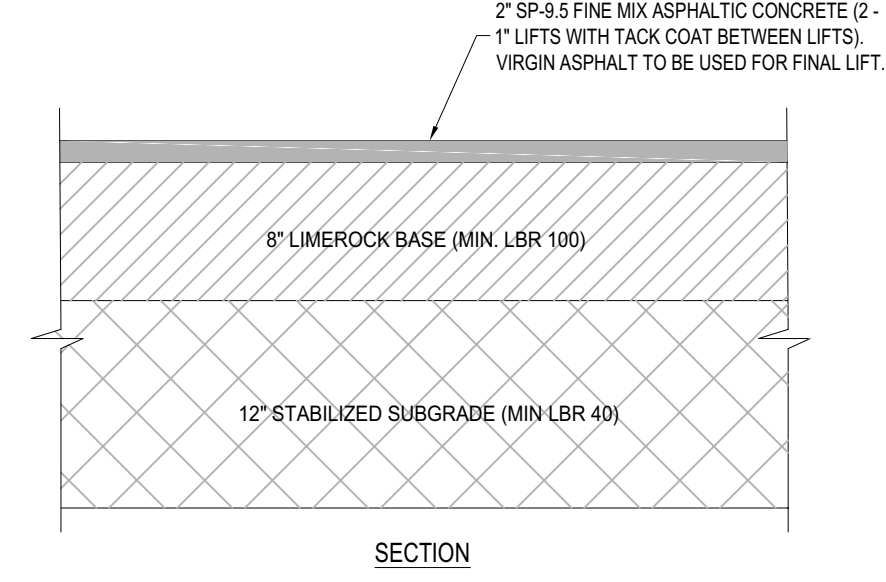
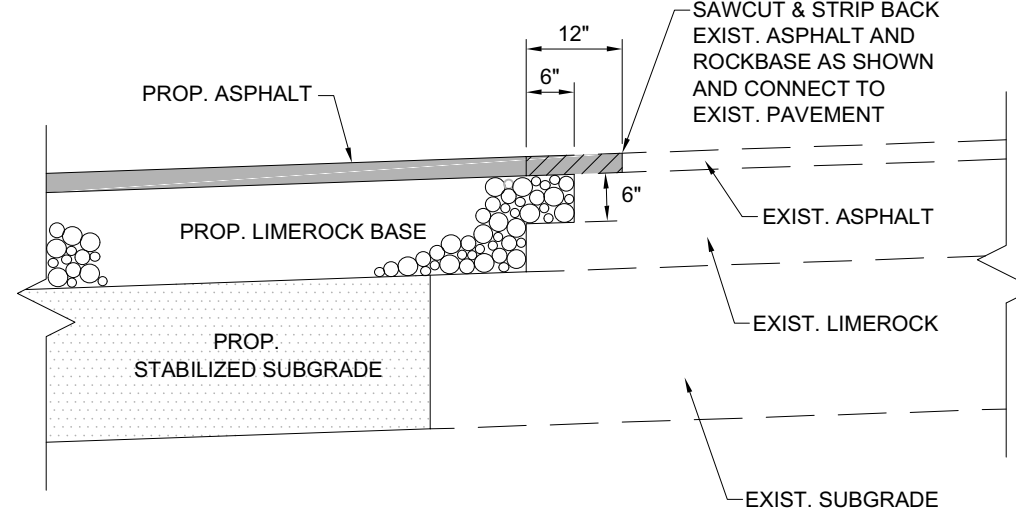


TYPE	"A"	"B"	"C"	"D"	"E"	"F"
C-4	4'-0" Ø	8"	8"	# 4 @ 12" C.C.E.W.	# 4 @ 12" C.C.E.W.	6'-4" Ø
C-5	5'-0" Ø	8"	8"	# 5 @ 12" C.C.E.W.	# 5 @ 12" C.C.E.W.	7'-4" Ø
C-6	6'-0" Ø	8"	8"	# 5 @ 12" C.C.E.W.	# 5 @ 6" C.C.E.W.	8'-4" Ø
C-7	7'-0" Ø	8"	8"	# 5 @ 12" C.C.E.W.	# 5 @ 6" C.C.E.W.	9'-4" Ø
C-8	8'-0" Ø	10"	10"	2" W.W.M. w/ # 4 @ 12" C.C. VERT	# 5 @ 6" C.C.E.W.	10'-8" Ø



TYPE	"A"	"C"	"G"	"H"
C-4	4'-0" Ø	8"	5'-4" Ø	# 4 @ 6" C.C.E.W.
C-5	5'-0" Ø	8"	6'-4" Ø	# 5 @ 8" C.C.E.W.
C-6	6'-0" Ø	8"	7'-4" Ø	# 5 @ 6" C.C.E.W.
C-7	7'-0" Ø	8"	8'-4" Ø	# 5 @ 6" C.C.E.W.
C-8	8'-0" Ø	10"	9'-8" Ø	# 5 @ 6" C.C.E.W.



## 1 PRECAST CIRCULAR CATCH BASIN

SCALE: NONE

## 2 PRECAST CONCRETE-TOP SLAB

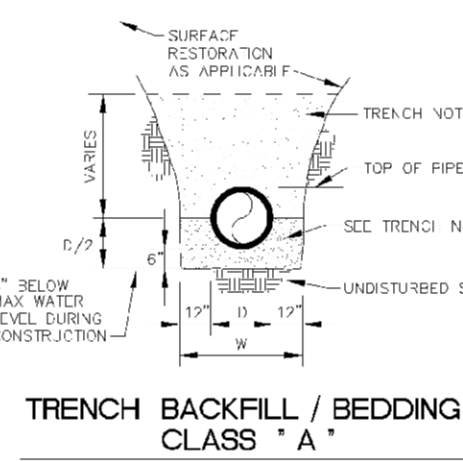
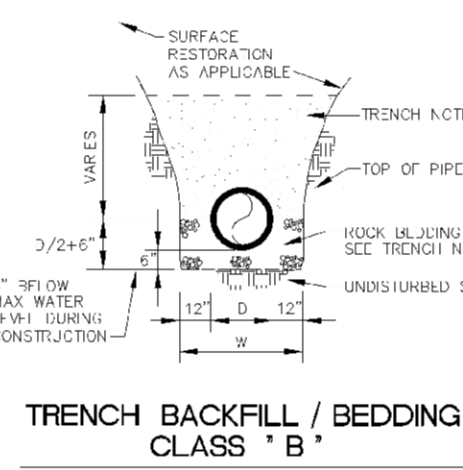
SCALE: NONE

## 3 SAWCUT/MATCH ASPHALT PAVEMENT DETAIL

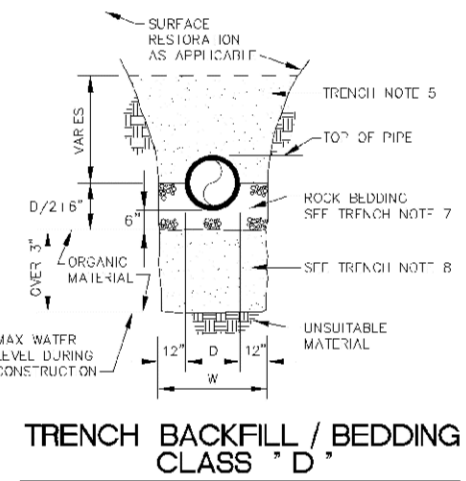
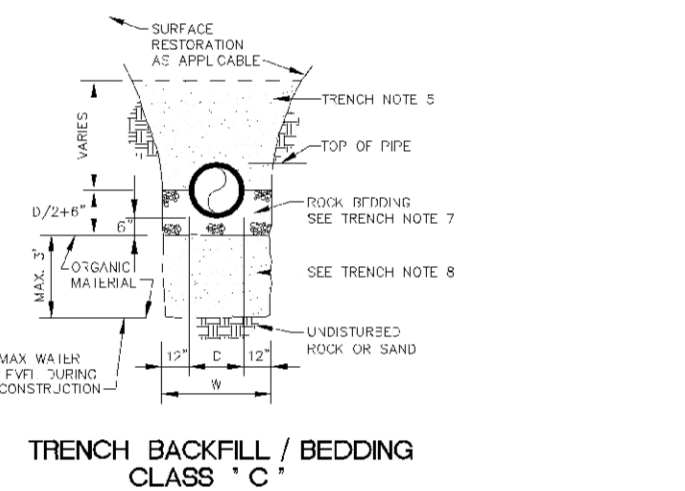
SCALE: NONE

## 4 TYPICAL ONSITE ASPHALT PAVEMENT SECTION

SCALE: NONE



ENGINEERING STANDARDS 2022			
REVISIONS	BY	DATE	DESCRIPTION
	ENGINEERING DIVISION		TRENCH BACKFILL / BEDDING
	CITY OF POMPAHO BEACH	DATE: JUNE 2022	DWG. NO. 203-1
	SCALE: N.T.S.		



ENGINEERING STANDARDS 2022			
REVISIONS	BY	DATE	DESCRIPTION
	ENGINEERING DIVISION		TRENCH BACKFILL / BEDDING
	CITY OF POMPAHO BEACH	DATE: JUNE 2022	DWG. NO. 203-2
	SCALE: N.T.S.		

1. OUTLINE OF TRENCH EXCAVATION IS FOR ILLUSTRATIVE PURPOSES ONLY. ACTUAL TRENCH WIDTH AND SHAPE WILL VARY WITH SOIL CONDITIONS. TRENCH EXCAVATION SHALL BE IN ACCORDANCE WITH THE "FLORIDA TRENCH SAFETY ACT" AND OSHA TRENCH SAFETY STANDARDS.
2. TYPICAL TRENCH BACKFILL/BEDDING FOR WATER MAIN AND FORCE MAIN INSTALLATIONS SHALL BE CLASS "A" AS SHOWN IN DETAIL.
3. TYPICAL TRENCH BACKFILL/BEDDING FOR GRAVITY SEWER INSTALLATION SHALL BE CLASS "B" AS SHOWN IN DETAIL.
4. TRENCH BACKFILL/BEDDING CLASS "C" AND CLASS "D" SHALL BE USED FOR PIPE INSTALLATIONS WHERE UNSTABLE TRENCH MATERIALS ARE ENCOUNTERED.
5. TRENCH ZONE BACKFILL SHALL BE MATERIAL TYPE 1 OR TYPE A THROUGH D, OR ANY MIXTURE THEREOF, WITH SURFACE RESTORATION TYPE "F". SURFACE RESTORATION SHALL BE PLACED IN LIFTS NOT TO EXCEED 6" AND COMPACTED TO 95% OF THE MATERIAL'S MAXIMUM DENSITY BY ASTM D-1557 (ASTM D-1557).
6. BEDDING MATERIAL FOR TYPICAL WATER MAIN AND FORCE MAIN INSTALLATION SHALL BE TYPE C. BEDDING SHALL BE COMPACTED TO 95% OF THE MATERIAL'S MAXIMUM DENSITY BY ASTM D-1557 (ASTM D-1557).
7. BEDDING MATERIAL FOR TYPICAL GRAVITY SEWER INSTALLATION AND ANY INSTALLATION WHERE UNSTABLE TRENCH MATERIALS ARE ENCOUNTERED SHALL BE TYPE E. BEDDING SHALL BE PLACED IN LIFTS NOT TO EXCEED 6" AND COMPACTED TO 95% OF THE MATERIAL'S MAXIMUM DENSITY BY ASTM D-1557 (ASTM D-1557).
8. UNSUITABLE MATERIAL SHALL BE REMOVED TO UNDISTURBED ROCK OR SAND OR TO 30" AS SPECIFIED BY ENGINEER. BACKFILL MATERIAL SHALL BE TYPE C. BACKFILL SHALL BE PLACED IN LIFTS NOT TO EXCEED 6" AND COMPACTED TO 95% OF THE MATERIAL'S MAXIMUM DENSITY BY ASTM D-1557 (ASTM D-1557).

### TRENCH BACKFILL / BEDDING NOTES

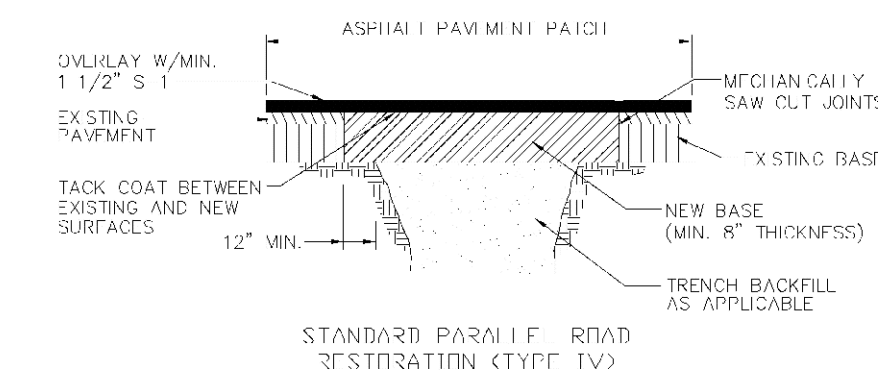
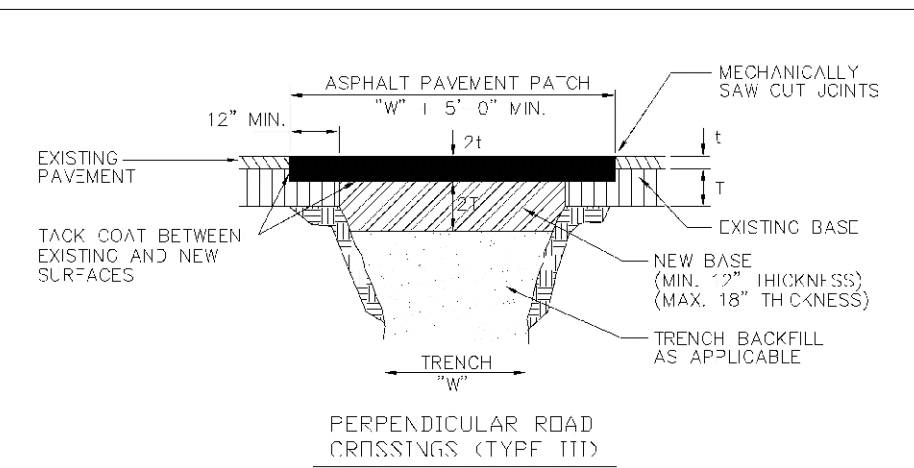
ENGINEERING STANDARDS 2022			
REVISIONS	BY	DATE	DESCRIPTION
	ENGINEERING DIVISION		TRENCH BACKFILL / BEDDING
	CITY OF POMPAHO BEACH	DATE: JUNE 2022	DWG. NO. 203-3
	SCALE: N.T.S.		

9. BEDDING TYPES - THE FOLLOWING TYPES OF SUITABLE MATERIALS ARE DESIGNATED AND DEFINED AS FOLLOWING:
- TYPE A: CRUSHED LIMEROCK OR SAND WITH 100 PERCENT PASSING A 1" INCH SIEVE AND A SAND EQUIVALENT VALUE NOT LESS THAN 50.
- TYPE B: CRUSHED LIMEROCK OR SAND WITH 100 PERCENT PASSING A 1/2" INCH SIEVE AND A SAND EQUIVALENT VALUE NOT LESS THAN 50.
- TYPE C: SAND WITH 100 PERCENT PASSING A 3/8" INCH SIEVE, AT LEAST 90 PERCENT PASSING A NUMBER 4 SIEVE, AND A SAND EQUIVALENT VALUE NOT LESS THAN 35.
- TYPE D: CRUSHED LIMEROCK WITH 100 PERCENT PASSING A 1" INCH SIEVE AND NOT MORE THAN 10 PERCENT A NUMBER 4 SIEVE.
- TYPE E: CRUSHED LIMEROCK OR SAND WITH 100 PERCENT PASSING A 3/4" INCH SIEVE AND NOT MORE THAN 10 PERCENT A NUMBER 4 SIEVE.
- TYPE F: CRUSHED LIMEROCK MILLING WITH FOLLOWING GRADATION REQUIREMENTS:

SIEVE SIZE	PERCENTAGE PASSING
2" INCH	100
1 1/2" INCH	90-100
1" INCH	70-90
3/4" INCH	0-15
NO. 200	0-5

### TRENCH BACKFILL / BEDDING NOTES

ENGINEERING STANDARDS 2022			
REVISIONS	BY	DATE	DESCRIPTION
	ENGINEERING DIVISION		TRENCH BACKFILL / BEDDING
	CITY OF POMPAHO BEACH	DATE: JUNE 2022	DWG. NO. 203-4
	SCALE: N.T.S.		



### SURFACE RESTORATION

ENGINEERING STANDARDS 2022			
REVISIONS	BY	DATE	DESCRIPTION
	ENGINEERING DIVISION		SURFACE RESTORATION
	CITY OF POMPAHO BEACH	DATE: MAY 2022	DWG. NO. 306-2
	SCALE: N.T.S.		

Maxwell T. Kaplan

Digitally signed by Maxwell T. Kaplan  
DN: c=US, o=Florida,  
ou=Qualifier=A01410C0000017BEAA  
C643B000050D4, cn=Maxwell T.  
Kaplan  
Date: 2024.04.03 16:15:00 -0400

**THOMAS**  
ENGINEERING GROUP

CIVIL ENGINEERS - PROJECT MANAGERS - LAND PLANNING - LANDSCAPE ARCHITECTS

1502 W. FLETCHER AVE.  
SUITE 100  
TAMPA, FL 33612  
P: (813) 379-4100  
P: (813) 379-7503

125 W. INDIANTOWN RD.  
SUITE 100  
JUPITER, FL 33458  
P: (561) 203-7503

REVISIONS			
REV.	DATE	COMMENT	BY

**811** KNOW WHAT'S BELOW  
ALWAYS CALL 811 BEFORE YOU DIG  
It's fast. It's free. It's the law.  
www.callsunshine.com

PROJECT NO.:	F230019
DRAWN BY:	JFV
CHECKED BY:	MTK
DATE:	
CAD I.D.:	F230019 - PGD DETAILS

PROJECT:

**PORSCHE CHAMPION CENTER**  
**300 W COPANS RD**  
FOR  
**CHAMPION PORSCHE**

POMPAHO BEACH  
FLORIDA

**THOMAS**  
ENGINEERING GROUP

6300 NW 31ST AVENUE  
FORT LAUDERDALE, FL 33309  
PH: (954) 202-7000  
www.ThomasEngineeringGroup.com

MAXWELL T. KAPLAN  
LICENSE  
No. 83366  
STATE OF FLORIDA  
PROFESSIONAL ENGINEER  
April 2, 2024  
FLORIDA BUSINESS CERT. OF AUTH. No. 27592

SHEET TITLE:

**PAVING, GRADING & DRAINAGE DETAILS**

SHEET NUMBER:

**PD-03**

**AAC**  
PZ23-12000033  
05/07/2024